

**MARK SCHEME for the May/June 2010 question paper**  
**for the guidance of teachers**

**0417 INFORMATION AND COMMUNICATION  
TECHNOLOGY**

**0417/03**

Paper 3 (Practical Test B), maximum raw mark 80

This mark scheme is published as an aid to teachers and candidates, to indicate the requirements of the examination. It shows the basis on which Examiners were instructed to award marks. It does not indicate the details of the discussions that took place at an Examiners' meeting before marking began, which would have considered the acceptability of alternative answers.

Mark schemes must be read in conjunction with the question papers and the report on the examination.

- CIE will not enter into discussions or correspondence in connection with these mark schemes.

CIE is publishing the mark schemes for the May/June 2010 question papers for most IGCSE, GCE Advanced Level and Advanced Subsidiary Level syllabuses and some Ordinary Level syllabuses.

<b>Page 2</b>	<b>Mark Scheme: Teachers' version</b>	<b>Syllabus</b>	<b>Paper</b>
	<b>IGCSE – May/June 2010</b>	<b>0417</b>	<b>03</b>

Candidate name, Centre number, candidate number

```
<HTML>
<HEAD>
  <TITLE>Relaxing Holiday Company - June 2010</TITLE>
  <link rel="stylesheet" type="text/css" href="JXstyles1.css">
</HEAD>
<BODY>
```

Correct stylesheet attached  
Must be relative referencing  
1 mark

```
<a name="START"></a>
```

Anchor START  
Can be in first cell of table  
Upper case  
Not visible on page  
1 mark

```
<TABLE width="100%" id="top">
  <TR align="center" valign="center">
    <TD colspan="4"></TD>
  </TR>
```

Table Width 100% 1 mark

```
<TR>
  <TD colspan="4">
    <h3>Last edited by Candidate name, centre number, candidate number
  </TD>
</TR>
```

```
<TR>
  <TD>
    <h2>Sun
  </TD>
  <TD>
    <h2>Sea
```

```
</TD>
  <TD>
    <h2>Sand
```

Hyperlink Snow  
To anchor SNOWZONE  
Upper case and wrong checklist  
1 mark  
1 mark

```
<h2><a href="#SNOWZONE">Snow</a>
```

Table Width 90% 1 mark

```
</TD>
</TR>
</TABLE>
```

```
<TABLE width="90%" align="center" id="middle">
  <TR>
    <TD rowspan="3"></TD>
    <TD><h3>We offer holidays to suit your every need. We can often make dreams come true.</TD>
  </TR>
```

```
<TR>
  <TD><h3>Let us arrange your holiday for you. We will collect you from your home and offer the best service of any holiday company in the world.</TD>
</TR>
```

```
<TR>
  <TD><h3>Combine our service with superb value for money. Contact us with your requirements and we are sure that we will not disappoint you.</TD>
</TR>
</TABLE>
```

Table Width 100% 1 mark

```
<TABLE width="100%" id="bottom">
  <TR>
    <TD>
      <h2>
    </TD>
```

Target \_sea  
Case as shown to JXSEA.HTM  
Ignore case  
Accept base target placed in head of page  
1 mark  
1 mark

```
<h2><a href="JXSEA.HTM" target="_sea">
  </TD>
</TR>
</TABLE>
```

<b>Page 3</b>	<b>Mark Scheme: Teachers' version</b>	<b>Syllabus</b>	<b>Paper</b>
	<b>IGCSE – May/June 2010</b>	<b>0417</b>	<b>03</b>

```

<h2><a href="mailto:RHC@cie.org.uk"><img src ="JXImg6.jpg"></a>
</TD>
</TR>
<TR align="center" valign="center">
<TD colspan = "4"> <img src ="JXFOOTER.jpg"></TD>
</TR>
<TR>
<a name="SNOWZONE"></a>
<TD colspan = "4">
<h1> Try RHC Snowzone</h1>
<h3> Why not relax with a chilling winter holiday on the
both short haul and long haul and can offer some of the be
chalets for the ultimate luxury. Leave the slopes and return
prepared for you by one of the world finest chefs. You will not find these holidays in any brochure, each holiday
is unique to your requirements. Contact us using the link above for further details.</h3>
</TD>
</TR>
<TR>
<TD colspan = "4">
<h2><a href="#START">Click Here</a> to return to the top of the page.</h2>
</TD>
</TR>
</TABLE>
</BODY>
</HTML>

```

**Target**    Phone image as link    1 mark  
JXImg6 only  
Penalise for absolute image reference  
Correct mailto:    1 mark  
Ignore case

**Anchor**    SNOWZONE    1 mark  
Case as shown  
No extra text

**Hyperlink**    Click Here    1 mark  
Click Here only  
Rest of text intact  
Returns to start    1 mark  
Allow follow through on name

Top left  
 Last edited by & name & No's  
 Any order for name and numbers  
 1 mark

Top table  
 From JXTOP.htm  
 Table must be fully visible  
 1 mark



Middle table 3 rows and 2 columns  
 Merged cells in column 1  
 Table centre aligned in window  
 Award only if tables fully visible  
 Correct text each cell  
 Can check in markup if needed  
 Style h3  
 JXHARBOUR.JPG left cell  
 1 mark  
 1 mark  
 1 mark  
 1 mark  
 1 mark  
 1 mark  
 1 mark  
 NEW SCREENSHOT

Relaxing Holiday Company - June 2010

# The Relaxing Holiday Company

Last edited by Candidate name, Centre number, candidate number

Sun	Sea	Sand	
-----	-----	------	--



We offer holidays to suit your every need. We can often make dreams come true.

Let us arrange your holiday for you. We will collect you from your home and offer the best service of any holiday company in the world.

Combine our service with superb value for money. Contact us with your requirements and we are sure that we will not disappoint you.

			
--	--	---	--

## Chill, let RHC take care of you!

### Try RHC Snowzone

Why not relax with a chilling winter holiday on the slopes. We can cater for a range of destinations, both short haul and long haul and can offer some of the best 'off piste' skiing and boarding. Try out catered chalets for the ultimate luxury. Leave the slopes and return to the chalet to find a superb a la carte dinner prepared for you by one of the world finest chefs. You will not find these holidays in any brochure, each holiday is unique to your requirements. Contact us using the link above for further details.

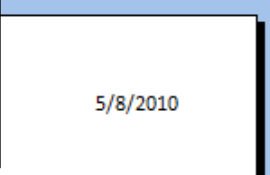
[Click here](#) to return to the top of the page.

Protected Mode: Off 90%

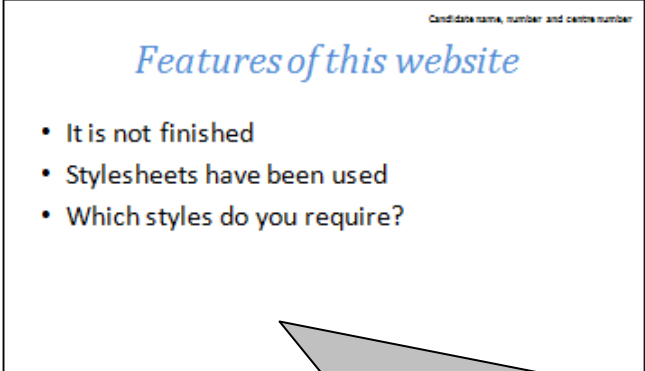
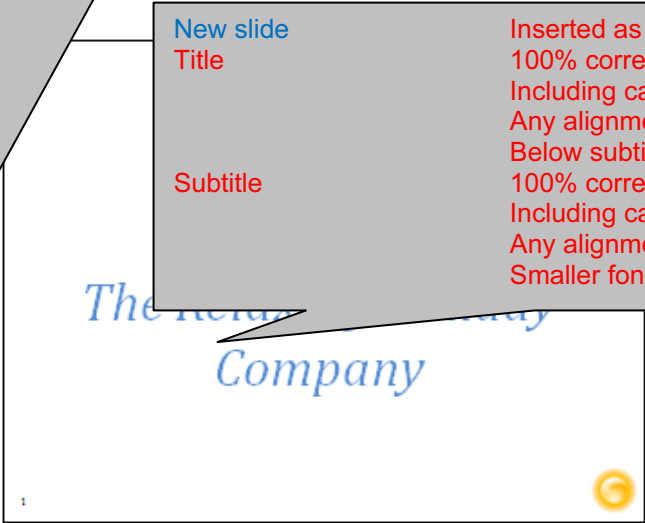
- Bottom table From JXBOTTOM.htm 1 mark
- Table must be fully visible
- Sun image left 1 mark
- Sea image 2nd 1 mark
- Sand image 3rd 1 mark
- Phone image right 1 mark
- Sun resized to 160 & aspect 1 mark
- Sand resized to 160 & aspect 1 mark

Page 6	Mark Scheme: Teachers' version	Syllabus	Paper
	IGCSE – May/June 2010	0417	03

Master slide – CHECK CONSISTENCY		
Background	White, slide numbers bottom left Left 1/3 of slide	1 mark
Name, cand no, Centre no	Top right black, 12pt, serif Right 1/2 of slide	1 mark
Image	Sun – bottom right Must not be source files – flexible Right 1/3 of slide	1 mark
Master slide items	Not overlapping any object Not touching and all present	1 mark



New slide	Inserted as first slide	1 mark
Title	100% correct Including case, can be on single line Any alignment/No bullet points Below subtitle	1 mark 1 mark
Subtitle	100% correct Including case, can be on single line Any alignment/No bullet points Smaller font than title	1 mark 1 mark




File JXPRES.RTF	Imported All slides present and intact Titles larger than bullets and consistent style (fonts/bullets) Bulleted lists consistent style Size may vary from slide to slide	1 mark 1 mark 1 mark
-----------------	---	----------------------------

5/8/2010

Candidate name, number and centre number

## *Background*


- Background colour can be added to stylesheets
- Background images can be added to stylesheets



Candidate name, number and centre number

## *Stylesheet JXstyle1.css*

- The background image in JXstyle1.css does not work because:
  - File not present in current directory or filename incorrect
- The html code to make the background colour show is:
  - `body {background-color: #025fb4 }`
- The text for h1 and h2 is not white and h3 is not yellow because:
  - No green element in hexadecimal colour code



2

**Slide 4**

**Answer 1** File not present/misnamed 1 mark

Not in current directory/folder

Text 'answer n here' has been replaced 1 mark

Must be all

**Answer 2** Body {} 1 mark

Background-color: #025fb4 1 mark

e.g. `body {background-image: url(j9sunset.jpg); background-color: #025fb4}`

**Answer 3** No green element 1 mark

Accept hex with FF for middle 2 digits

In hexadecimal/colour code/definition 1 mark

5/8/2010

Spacing

- The cell spacing has changed between JXstyle1.css and JXstyle2.css
- Cell padding is:
  - Space between the text and the cell wall inside a cell of a table
- Cell spacing is:
  - Space between the walls of 2 adjacent cells

Slide 5

Answer 4	Space between text and cell wall	1 mark
	Inside/in table/cell	1 mark
	Interchange cell wall and border	
Answer 5	Space between	1 mark
	Walls of 2 adjacent cells	1 mark
	Interchange cell wall and border	

Printed	2 slides per page	1 mark
---------	-------------------	--------

3



**Destination** Lookup used 1 mark  
 Lookup or Vlookup  
 Correct lookup reference 1 mark  
 Do not allow range  
 Lookup – relative reference 1 mark  
 Correct range 1 mark  
 Including filename  
 Range – absolute reference 1 mark  
 Check range works  
 Correct return column 1 mark  
 Award if visible and Lookup used  
**Check first row**

**Trips** COUNTIF function 1 mark  
 Correct range 1 mark  
 Check range works  
 Range – absolute reference 1 mark  
 Correct lookup 1 mark  
 Lookup – relative reference 1 mark

=VLOOKUP(JXDEST.csv!\$A\$2:\$B\$11,2,0)  
 =VLOOKUP(JXDEST.csv!\$A\$2:\$B\$11,2,0)  
 =VLOOKUP(B6,JXDEST.csv!\$A\$2:\$B\$11,2,0)  
 =VLOOKUP(B7,JXDEST.csv!\$A\$2:\$B\$11,2,0)  
 =VLOOKUP(B8,JXDEST.csv!\$A\$2:\$B\$11,2,0)

**Trips**  
 =COUNTIF(\$D\$25:\$D\$98,B2)  
 =COUNTIF(\$D\$25:\$D\$98,B3)  
 =COUNTIF(\$D\$25:\$D\$98,B4)  
 =COUNTIF(\$D\$25:\$D\$98,B5)  
 =COUNTIF(\$D\$25:\$D\$98,B6)  
 =COUNTIF(\$D\$25:\$D\$98,B7)  
 =COUNTIF(\$D\$25:\$D\$98,B8)

**Days** Correct SUMIF function 1 mark  
 Correct range 1 mark  
 Check range works  
 Range – absolute reference 1 mark  
 Lookup – relative reference 1 mark  
 Correct range 1 mark  
 Check range works  
 Range – absolute reference 1 mark  
 Other functions like SUMIFS may be used

Month	Mcode	Days
January	1	=SUMIF(\$B\$25:\$B\$98,B11,\$F\$25:\$F\$98)
February	2	=SUMIF(\$B\$25:\$B\$98,B12,\$F\$25:\$F\$98)
March	3	=SUMIF(\$B\$25:\$B\$98,B13,\$F\$25:\$F\$98)
April	4	=SUMIF(\$B\$25:\$B\$98,B14,\$F\$25:\$F\$98)
May	5	=SUMIF(\$B\$25:\$B\$98,B15,\$F\$25:\$F\$98)
June	6	=SUMIF(\$B\$25:\$B\$98,B16,\$F\$25:\$F\$98)
July	7	=SUMIF(\$B\$25:\$B\$98,B17,\$F\$25:\$F\$98)
August	8	=SUMIF(\$B\$25:\$B\$98,B18,\$F\$25:\$F\$98)
September	9	=SUMIF(\$B\$25:\$B\$98,B19,\$F\$25:\$F\$98)
October	10	=SUMIF(\$B\$25:\$B\$98,B20,\$F\$25:\$F\$98)
November	11	=SUMIF(\$B\$25:\$B\$98,B21,\$F\$25:\$F\$98)
December	12	=SUMIF(\$B\$25:\$B\$98,B22,\$F\$25:\$F\$98)

**Replication** All 3 formulae 1 mark  
**Formulae, data and labels** Fully visible 1 mark  
**Orientation** Landscape 1 mark  
**Print area** Selected data only 1 mark

**Footer** name and numbers 1 mark

<b>Page 10</b>	<b>Mark Scheme: Teachers' version</b>	<b>Syllabus</b>	<b>Paper</b>
	<b>IGCSE – May/June 2010</b>	<b>0417</b>	<b>03</b>

<b>Destination</b>	<b>Code</b>	<b>Trips</b>
Bahamas	BAH	7
Cozumel	COZ	7
Egypt	EGY	16
India	IND	13
Maldives	MAL	11
Sri Lanka	SRI	8
Thailand	THA	12

Row 1, 10, 24 Centre aligned  
Only three rows shown  
Orientation Bold and italic  
Portrait 1 mark  
1 mark

<b>Month</b>	<b>Mcode</b>	<b>Days</b>
January	1	28
February	2	31
March	3	42
April	4	69
May	5	104
June	6	80
July	7	77
August	8	55
September	9	83
October	10	66
November	11	125
December	12	70

<b>Day</b>	<b>Month</b>	<b>Year</b>	<b>DCode</b>	<b>Discount</b>	<b>Duration</b>
27	9	2010	EGY	Y	10
14	8	2010	MAL	N	14
21	8	2010	THA	N	7
2	8	2010	COZ	Y	10
10	5	2010	SRI	Y	14
27	5	2010	BAH	N	21
28	9	2010	IND	N	14
21	4	2010	IND	N	10
2	12	2010	COZ	Y	14
16	5	2010	EGY	Y	14
18	11	2010	SRI	Y	21
4	7	2010	EGY	Y	7
11	3	2010	THA	N	7
3	4	2010	COZ	Y	14
5	6	2010	COZ	Y	7
3	10	2010	IND	N	14
1	6	2010	MAL	N	14
19	6	2010	THA	N	14
23	11	2010	SRI	N	14
5	7	2010	THA	Y	14
1	6	2010	EGY	N	14
23	12	2010	MAL	Y	7

Page 11	Mark Scheme: Teachers' version				Syllabus	Paper
	IGCSE – May/June 2010				0417	03

21	10	2010	IND	N	14
14	11	2010	MAL	N	10
1	3	2010	BAH	Y	7
3	1	2010	COZ	Y	14
17	9	2010	THA	N	14
2	5	2010	SRI	N	10
14	8	2010	THA	Y	7
31	7	2010	THA	Y	14
7	5	2010	EGY	N	7
15	5	2010	EGY	Y	14
17	8	2010	SRI	Y	7
21	1	2010	BAH	N	7
29	12	2010	MAL	Y	14
5	11	2010	THA	Y	21
23	11	2010	MAL	Y	14
29	9	2010	IND	Y	7
29	0	2010	EGY	N	14
27	10	2010	BAH	Y	7
18	8	2010	IND	Y	10
28	7	2010	BAH	Y	14
3	10	2010	MAL	N	10
19	0	2010	EGY	Y	10
19	3	2010	BAH	N	14
4	6	2010	EGY	Y	21
12	4	2010	SRI	Y	10
4	11	2010	EGY	Y	14
30	5	2010	IND	N	14
26	9	2010	IND	N	14
10	4	2010	MAL	Y	14
29	9	2010	EGY	Y	10
26	10	2010	IND	N	14
7	11	2010	MAL	Y	14
7	12	2010	THA	N	14
14	12	2010	IND	N	7
5	6	2010	COZ	N	10
25	5	2010	EGY	Y	10
14	7	2010	SRI	Y	14
12	2	2010	IND	Y	14
11	1	2010	EGY	Y	7
5	3	2010	THA	N	14
22	7	2010	IND	N	7
23	4	2010	IND	Y	14
24	12	2010	THA	Y	14
20	2	2010	THA	Y	7
4	11	2010	MAL	N	10
19	10	2010	EGY	N	7
13	9	2010	EGY	N	7

<b>Page 12</b>	<b>Mark Scheme: Teachers' version</b>				<b>Syllabus</b>	<b>Paper</b>
	<b>IGCSE – May/June 2010</b>				<b>0417</b>	<b>03</b>

17	9	2010	MAL	Y	7
29	4	2010	EGY	Y	7
20	2	2010	COZ	N	10
30	11	2010	SRI	Y	7
15	7	2010	BAH	Y	7

<i>DCode</i>	<i>Discount</i>	<i>Duration</i>
EGY	Y	10
EGY	Y	14
EGY	Y	7
EGY	Y	14
EGY	Y	10
EGY	Y	21
EGY	Y	14
EGY	Y	10
EGY	Y	10
EGY	Y	7
EGY	Y	7

<b>Search</b>	DCode = EGY and Discount = Y	1 mark
<b>Rows</b>	1–23 hidden	1 mark
<b>Columns</b>	A, B, C Hidden	1 mark